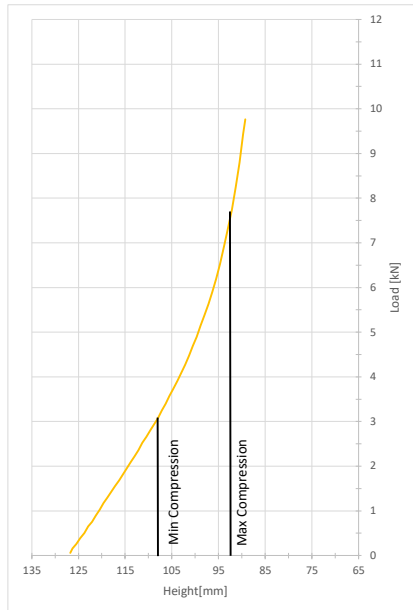
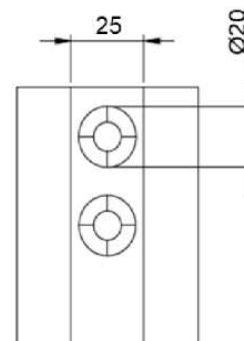
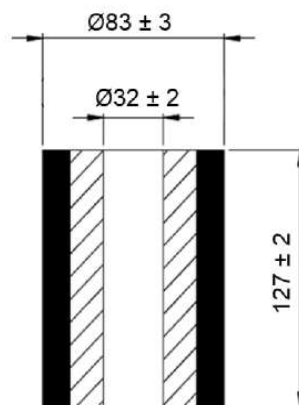


Continental SAM

DN 83 DH 127 IN 32



Compression [%]	15	20	22.5	25	27.5
Load [kN]	3.1	4.3	5.1	6.2	7.7
Height [mm]	108	102	99	96	92
Spring Rate [kN/m]	183	232	286	385	592
Effective Deflection [mm]	17	18	18	16	13
Natural Frequency [Hz]	3.9	3.7	3.7	3.9	4.4
Maximum OD [mm]	88	90	92	93	94
Weight [Kg]	0.30				



Continental SAM is the solution for spring replacement and vibration isolation. With its resistant, durable and economical design it helps to cut costs in nearly all industrial applications.

- › better working conditions due to a dramatically reduced noise level
- › reduced downtimes
- › compact design
- › high load-bearing capacity
- › reliable even in damp or corrosive conditions
- › maintenance-free
- › safe due to the absence of moving parts
- › reliable even in extreme temperatures (-40°F to 167°F, -40°C to +75°C)